

## Telematic devices for vehicles Vehicle telematics with Telic devices

Our telematics units offer a wide range of services for use in passenger cars, commercial vehicles and off-road vehicles. Based on a state-of-the-art GNSS concept, our telematics devices can locate very precisely even under difficult conditions. The permanently installed devices offer access to various vehicle interfaces e.g. CAN bus, 1-wire and RS232.

SBC AVL 4G and SBC3 4G are equipped with the latest LTE Cat M1 technology that can be used worldwide and 2G fallback.

Our telematics units can either be installed inside a vehicle, or they can be fitted with a robust dust and water-proof housing and installed outdoors, e.g. under a trailer.

An essential feature of our products is the extremely low power consumption. In sleep mode, for example, the consumption of the SBC AVL 4G is lower than the power consumption of the clock in a dashboard. Thus, the vehicle battery is not noticeably stressed, even if the vehicle has been standing for many weeks.

### Advantages

- The fix installed devices are equipped with the latest mobile technology (LTE Cat M1 and 2G Fallback).
- A highly sensitive GNSS receiver and a professional antenna design enable the devices to be installed in places where it would not have been possible a few years ago due to poor GNSS reception.
- The mobile radio and GNSS antennas are implemented into the device. This considerably simplifies the device installation.
- The Picotrack SafeDrive is operated via the cigarette lighter without any installation effort.
- The various interfaces such as CAN bus, 1-wire and RS232 enable versatile use for different telematics applications.
- The SBC3 is equipped with a robust housing for installation outdoors.



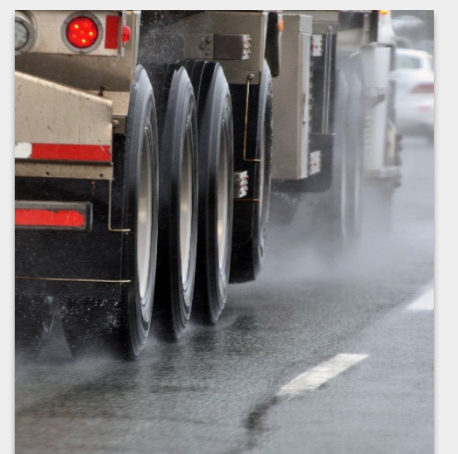
Passenger cars



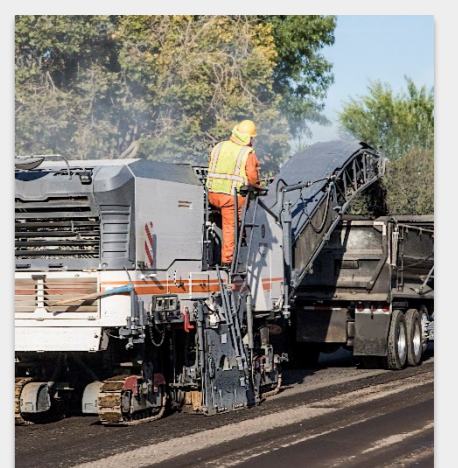
Light to heavy commercial vehicles



Trucks



Trailer



Construction machinery



Picotrack SafeDrive






SBC AVL 4G



SBC3 CAN 4G

## Technical Data

Category	Properties	Picotrack SafeDrive	SBC AVL 4G	SBC3 CAN 4G
Description	Product picture			
	Summary	For use in the cigarette lighter. Automatic detection of insertion and removal. External USB charging socket for charging external devices.	Compact telematics unit for locating cars and commercial vehicles. State-of-the-art mobile technology with LTE Cat M1 and 2G fallback. With integrated cellular and GNSS antennas 1-wire and RS232 interfaces. Integrated 660 mAh battery.	Telematics unit with a robust housing for demanding telematics applications. State-of-the-art mobile technology with LTE Cat M1 and 2G fallback. With integrated cellular and GNSS antennas Access to many vehicle interfaces including CAN bus, 1-wire and RS232. Integrated 660 mAh battery.
	Item number	01114	04022	03032
Mobile radio		GSM/GPRS	LTE Cat M1 with 2G Fallback	
Location	GNSS	GPS / Glonass		
Software	Software Download Over The Air (DOTA)	X	X	X
	Storage capacity for messages	~ 2.000 (Pure position data)	~ 20.000 (Pure position data)	
Hardware	Casing	Cigarette lighter plug	Small & compact design	Dust & water resistant
	IP protection class	-	-	IP6K6K
	Mobile radio- & GNSS-Antenna	Integrated	Integrated	Integrated
	Motion detection	X	X	X
	Status indicators	1 LED (optional 2 additional LEDs)	3 LEDs (Mobile radio, GNSS; battery)	
	Approvals	CE	E1, CE	CE, E1
Hardware Interfaces	Status ignition (on/off)	-	1x	1x
	Digital / analog inputs	-	1x	2x
	Digital output	-	1x	1x
	1-Wire	-	- iButton ID key - Temperature sensor	- iButton ID key - Temperature sensor
	CAN Bus	-	-	Configurable CAN, FMS
	RS232	-	x	x
	USB	External USB port for charging external devices	Configuration & tracing	-
Power supply	External voltage range	7V - 30V	7V - 32V	7V - 32V
	Battery capacity	300 mAh (LiPo)	660 mAh (LiPo)	660 mAh (LiPo)
	Consumption in sleep mode (external source)	~ 1 mA (@12V)	≤ 0,5 mA (@12V)	~ 1 mA (@12V)
	Consumption in sleep mode (battery)	≤ 0,135 mA	≤ 0,07 mA	≤ 0,14 mA
Hardware properties	Dimensions	104 x 43 x 24 mm	74 x 49 x 20 mm	150 x 65 x 45 mm
	Operating temperatur	-30°C to +75°C	-30°C to +70°C	-30°C to +70°C
	Charging temperature	0°C to +45°C	0°C to +45°C	0°C to +45°C
	Weight	60g	50g	220g