

GT910 G

Quad Band GSM/GPRS Terminal

The GT910 G is an industrial terminal that uses GSM/GPRS technology to transmit data. It can be used worldwide, since it supports all defined GSM frequency bands as a quad band terminal.

The GT910 G terminal is especially interesting for customers who are looking for a cost-effective terminal and want to continue to rely on 2G technology. Due to the integrated power saving mode, applications can be realized that have particularly high requirements for low power consumption.

For the connection of the terminal a RS232 interface and a USB 2.0 interface are available.

System integrators can develop their own applications in the programming languages Python or C and run them on the terminal.



Advantages

- Stationary applications can be monitored remotely and service calls can be reduced and optimized
- Terminal suited for worldwide use
- Robust design for industrial use
- Extremely low power consumption in power saving mode
- Programmable via Python or C

Performance Features

- GSM/GPRS Terminal
- Quad Band GSM
- Wireless firmware upgrade (FOTA)
- RS232 & USB 2.0 interfaces
- 1 analog input

Examples of applications



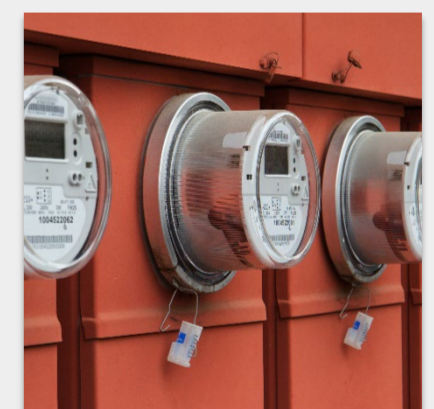
Monitoring of vending machines



Monitoring of industrial plants



Intelligent control of power grids



Transmission of smart meter data for e.g. electricity, gas and water



Monitoring of heating, ventilation and air conditioning systems

Technical data

Mobile details

- Module: Telit GE910-QUAD
- GSM/GPRS frequency bands: GSM(850) / EGSM(900) / DCS(1800) / PCS(1900)
- GPRS Class 10
- GPRS performance features:
 - Mobile station class B
 - Coding scheme 1 to 4
 - PBCCH support
 - NACC, Extended TBF
- Transmission power:
 - Class 4 (2W) for GSM850/GSM900
 - Class 1 (1W) for GSM1800/GSM1900
- USSD
- SMS: Text and PDU Modi, Cell Broadcast, SMS over GPRS
- Additional wireless performance features: DARF

Software

- AT command set: TS 27.005 and 27.007 + Telit specific AT commands
- Programming language: Python or C, APIs for Telit AppZone
- Firmware update: Serial + FOTA
- TCP/IP-Stack: TCP, UDP, ICMP, HTTP, DNS, FTP, SSL, SMTP
- Jamming Detection

Power supply

- Voltage range: 5V-32V
- Power consumption (Idle Mode): ~19mA *
- Power consumption (Low Power Mode): ~2mA(*)
- USB host-powered: Optional

Physical description

- Operating temperature: -30°C to +75°C
- Size: 77x66x26 mm
- Weight: 91g

Hardware features:

- IP protection : IP40
- Memory: 2MB RAM / 5MB Flash
- SIM-card holder: 1x (1,8/3 Volt)
- SIM Chip Option
- LEDs: 1x GSM
- Real time clock: With alarm function

Connectors

- D-Sub (9-polig): 1x socket for RS232
- USB: Mini-USB (USB 2.0)
- RJ11: 1x Power supply + 1x Analog input + 1x Optional output (**)
- FME: 1x Antenna connector

Approvals: CE

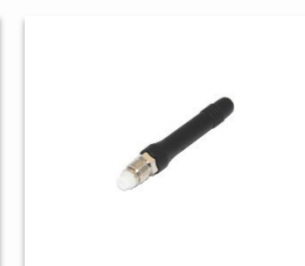
(*) Average values (including peaks) with minimum 1 minute measuring time

(**)Optional features: Please contact us to discuss your requirements for developing customized terminal products.

Additional extras (exemplary)



Power supply unit



Stub antenna



Roof screw antenna



Magnetic base antenna